



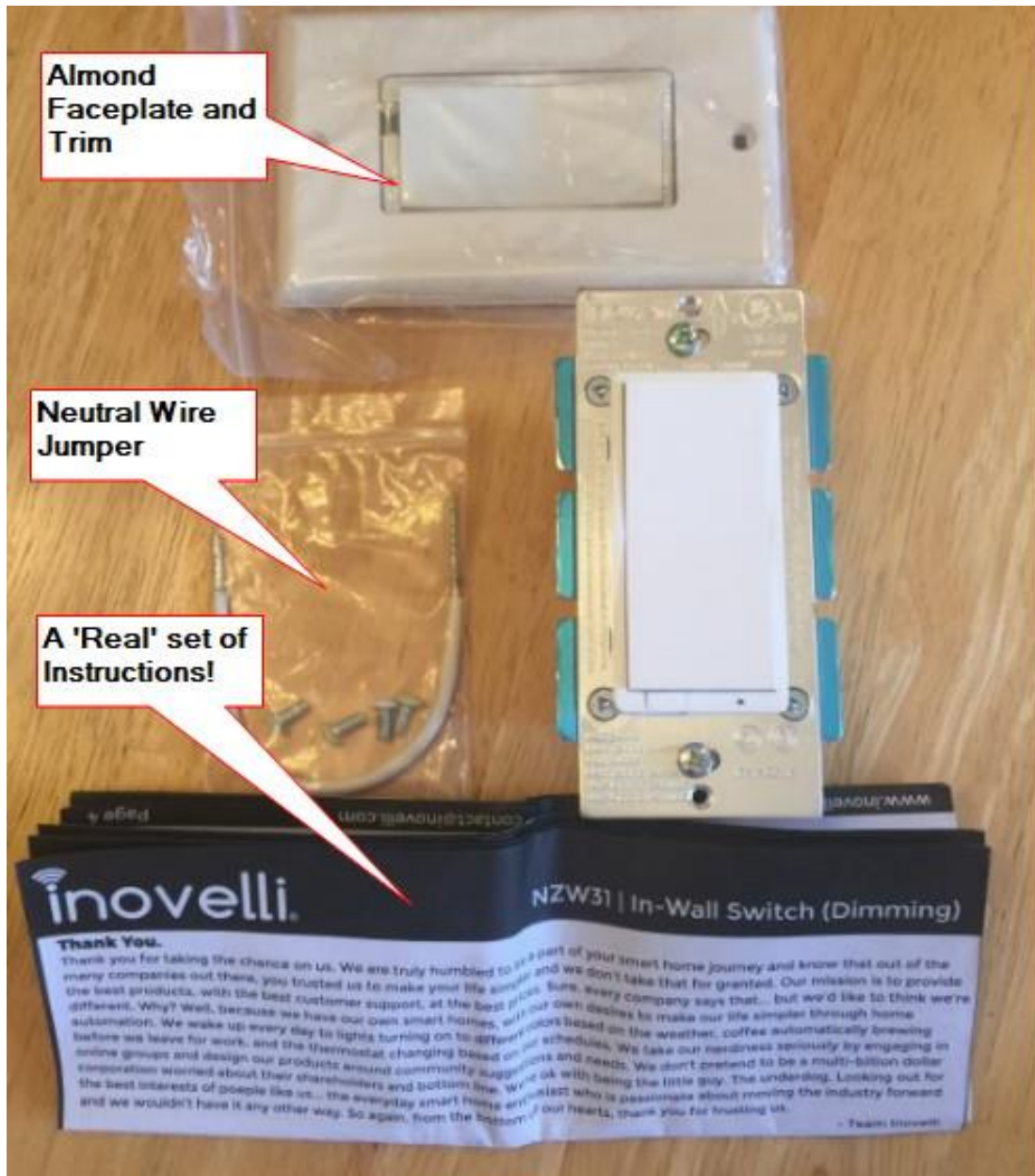
Description:

[Inovelli](#) now provides [Z-Wave light switches](#) for your home automation projects! These switches are an attractive solution for your light switching needs in they do not require the purchase of a 'companion' switch for three-way lighting applications. You can use your existing switch for the companion side. Since the switch only costs around \$30 this is an attractive choice that our forum members should consider.



I ordered the switch on Amazon and selected the dimmable, non-scene version. They also offer dimmable, scene-capable as well as plain on-off types. They are available in paddle or (older style) rocker selections.

The package contained the switch, an almond colored face-plate/trim option, a neutral wire jumper, and a real set of paper instructions!



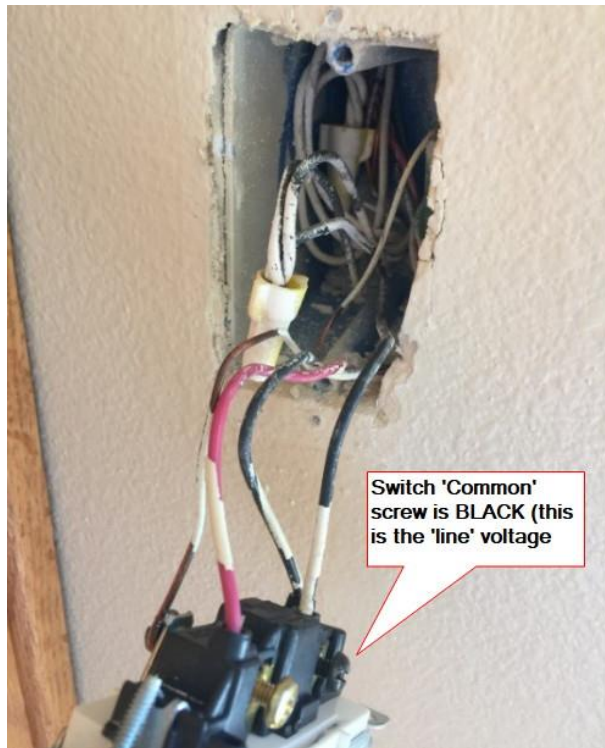
Installation Methodology:

DISCLAIMER: CocoonTech and the article's author are not responsible for the accuracy of the contents below or liable for any damage resulting from following anything based on this article. The user is responsible for basic knowledge in working with household electricity including how to properly wire connections and switches as well as locating the power source and ensuring that it is disconnected from the circuit before removing and installing any hardware.

I purchased the switch for automating a three way scenario for my backyard lighting.

Though the instructions provided a good overview of the switch and basic functions, I found their [YouTube video](#) a lot easier to follow.

My situation was exactly like the one described in the YouTube video as shown below (before any existing switches were disconnected).



After identifying the traveler wires, load, line, neutral and ground wiring in both switches I first removed the load side switch wiring. The Inovelli switch was wired in exactly as shown in the YouTube video.

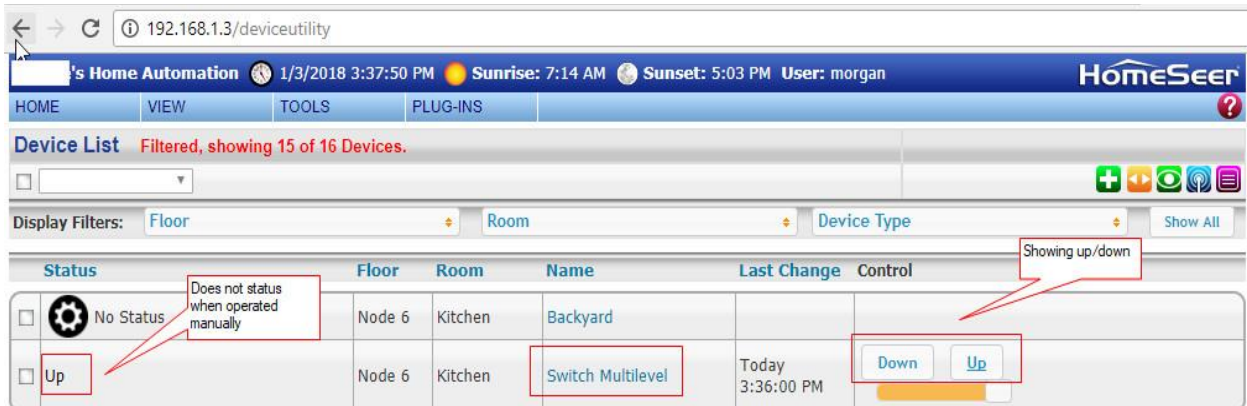
I then removed the wiring from the non-smart existing switch except for the ground wire. I connected the two black wires together and place the red and white wires on the existing switch exactly as shown in the YouTube video.



I was then anxious to rush out to turn the breaker back on to restore power and test this setup out, but then remembered that the WRITTEN instructions said to enable the Z-Wave enrollment process BEFORE turning power on (as the switch will start this process as soon as power is restored). *Note this was not emphasized in the YouTube video!*

Since I'm using [HomeSeer](#) for my automation system (via their [HomeTroller Zee S2](#) device), I started their [Z-Tool+](#) Z-Wave enrollment application on my I-Phone, clicked on 'Add Device', then turned the breaker on. After a few seconds I saw that the Inovelli switch enrolled in my Z-Wave network.

After testing both switches for proper manual operation (on/off/dimming) I started the HomeSeer software and noticed that a device was automatically created as shown below.



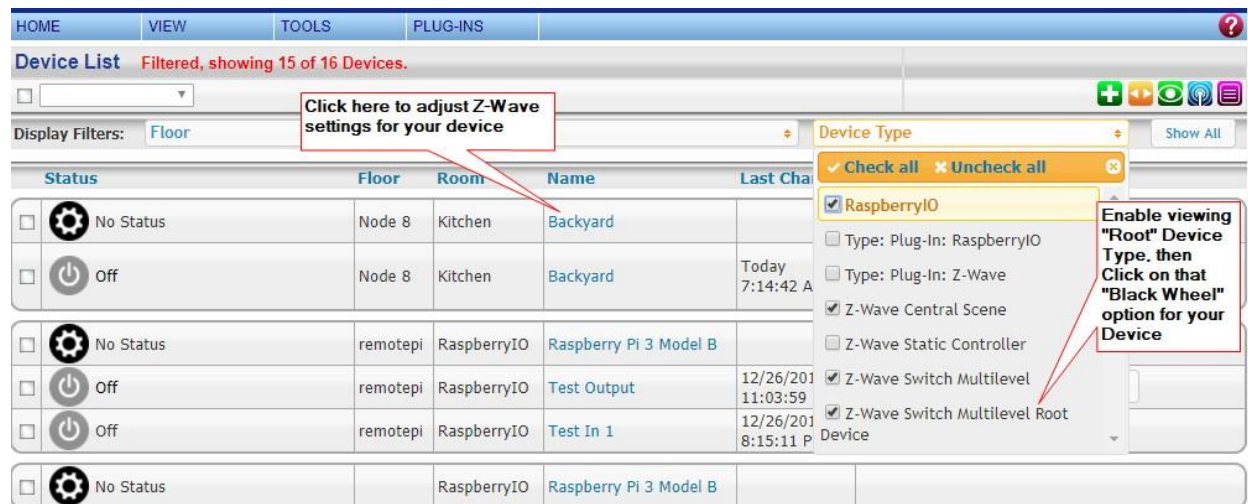
Notice that the switch showed up with the default name “Switch Multilevel”, but more notably had ‘Down’ and ‘Up’ in place of “Off” and “On”.

I was able to control the switch from HomeSeer using the Down and Up buttons and dim it via the slider control. I then tested to see if the switch would status properly in HomeSeer if operated manually and it did not.

After a few emails with Inovelli tech support, they reached out to a known HomeSeer user (*I don't know who this was but wish to thank them*) who showed how to adjust the settings in HomeSeer for this device to status and display properly. Inovelli's tech support was very responsive and supportive in helping solve this problem!

Since a lot of our [CocoonTech forum](#) members use HomeSeer I will show how to make these settings below. Turns out that this device did not default to the ‘HomeSeer’ *association* for Z-Wave control (which is why it wasn't updating its status when operated manually)

First ensure that you are viewing the ‘root’ level of your devices by the selection of the ‘Device Type’ as shown below.



You should now see a black ‘wheel’ icon with your device. Click on the devices name in that root row as shown above. You will now see the menu below where you can add the HomeSeer association for this device as shown below.

Modify Device Node 8 Kitchen Backyard 1/4/2018 10:36:07 AM Sunrise: 7:14 AM Sunset: 5:04 PM User: [redacted] HomeSeer

HOME VIEW TOOLS PLUG-INS

Configuration Advanced Status Graphics **Z-Wave**

Information About Node 8 Select this tab to modify 'Associations'

Options

Node Number: 8

Polling Interval: 0 Hours 0 Minutes 0 Seconds

Functions

Rescan Remove Bad Node Replace Node Test Connectivity Optimize Full Optimize Audit This Node

Firmware Update

Settings Select "Group 1". ensure "HomeSeer" is selected in the drop down to the right, then click "APPLY". This should result in the screen as shown here (Under Existing Associations)

Associations

Update

If this device was modified by another controller or if the association information displayed appears to be invalid, click the button to the left to retrieve the association information from the device. If the node is a battery operated node or one that is not always listening, please make sure to wake up the node prior to clicking the button.

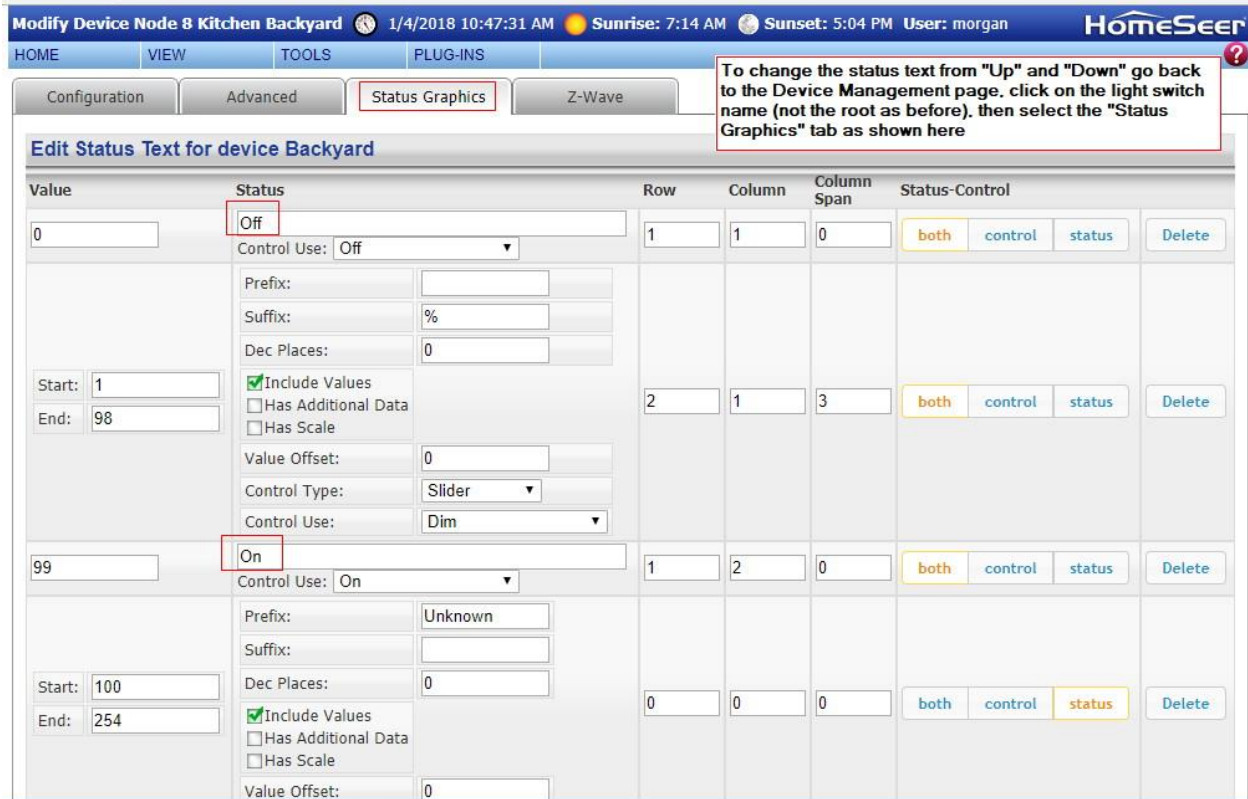
Association Group Device to be Controlled Add Association

Existing Associations

Group 1 HomeSeer (ID: 1) X

Select the Z-Wave tab and then go to the “Association Group” drop down and select “Group 1” (if not already selected). Ensure the ‘Device to be Controlled’ selection shows “HomeSeer”, then click on APPLY. You should then see the Group1 association with HomeSeer (ID:1) at the bottom of your screen.

Now, to change the status of the switch from Down and Up to Off and On, go back to the main Device Management window. Now click on the switch on/off row’s switch name (below or above the root selection you previously selected above) and you will see the display shown below.



Click on the Status Graphics tab and change the ‘Down’ and ‘Up’ selections to “Off” and “On” as shown above.

Now test your switch and you should see that it has the proper On/Off status when operated manually. Also, the HomeSeer display on the main Device Management page should now show the Off/On selections above the dimmer slider control.

Congratulations! You now have a Z-Wave enabled three-way switch setup working with your HomeSeer system (for around \$30)!

Now, there is one caveat with this switch which is, you can NOT dim this switch (only on and off control) with your existing (non-smart) switch.

There are a few other settings with the switch itself that you can set. For instance, the default setting is when the switch is on, the blue led status light at the bottom of the switch turns off. I wanted this reversed and easily accomplished this by tapping the top of the switch ten times (as described in the written instructions).

There are other switch parameters you can set as well, such as the ramp rate (how fast the light will turn on/off) as well as a minimum dim level. The developers of Inovelli provided the two tables below (for their two switch models) to show additional parameter settings that are available.

Model NZW30 Technical Documentation

Configuration Parameters

Number	Name	Size	Description	Range	Default
3	LED Indicator	1	Change when the LED indicator is on.	0. On when switch is off 1. On when switch is on 2. Disabled	1
4	Invert Switch	1	Inverts which button is On and which is Off on the switch. Useful if it was installed upside down.	0. Disabled 1. Enabled	0
5	Auto Off	2	Automatically turn the switch off after this many seconds.	1-32767	0 (Off)

Model NZW31 Technical Documentation

Configuration Parameters

Number	Name	Size	Description	Range	Default
1	Dimming Step	1	Each step of the dimming process will increase or decrease the brightness by this percentage. Increasing this will make the transition time quicker.	1-99	1
2	Minimum Level	1	This is the minimum level that the switch will dim the light to. Useful if you have a bulb that does not come on, flickers, or buzzes at low levels.	1-99	1
3	LED Indicator	1	Change when the LED indicator is on.	0. On when switch is off 1. On when switch is on 2. Disabled	1
4	Invert Switch	1	Inverts which button is On and which is Off on the switch. Useful if it was installed upside down.	0. Disabled 1. Enabled	0
5	Auto Off	2	Automatically turn the switch off after this many seconds.	1-32767	0 (Off)

Conclusion:

Overall, I'm very satisfied with this switch. I have no need to dim the switch manually with the existing switch (after all you are 'automating' this after all this trouble, right?) so I don't mind that one limitation.

I created events in HomeSeer the same as any other device/switch and now have my backyard lights turn on at sunset, dim 35% at 10:00 PM, then turn off at sunrise!

The tactile feel of the switch is very positive and doesn't feel like a 'cheap' switch at all. I also like the subtle LED indicator at the bottom.

One note: I did not get the scene enabled version of this switch and can't report on this capability's compatibility with HomeSeer. Note that this switch is advertised to work with a variety of automation products as listed on their website. Also, Inovelli's tech support is outstanding (a lot of email correspondence was done late into the evening).

So, if you are interested in a great quality switch with a less expensive cost vs most products out there, give this a try!

For more reviews on home automation and security products, visit CocoonTech.com. Our forum support is second to none. Our membership boasts a large selection of people with very eclectic skills and all are willing to help and give great advice!



© 2018 COCOONTECH.COM, ALL RIGHTS RESERVED

This article or any portion thereof may not be reproduced, published, posted, or used in any manner whatsoever without the express written permission of CocoonTech.com except for brief quotations for product/subject capabilities/review purposes. BSR